

Solutions

ATM Switch Gateway (ASG)

An economical alternative for ITI users who have ITI ABS0NNN/AAS0NNN ATM (legacy) interfaces desiring WAN speeds of TCP to ISO 8583 ATM Switch(es)

PNC's ATM Switch Gateway (ASG) is a very economical and transparent solution for upgrading from an ITI legacy ATM Switch interface (IBM 3270/2780/3780 Bisynchronous) to a TCP/ISO 8583 WAN interface to that ATM switch.

ITI Users who have an "ABS0NNN" ATM (legacy) interface desiring WAN speeds of TCP/ISO 8583 interfaces to ATM Switch can receive the benefits of WAN speeds by implementing the ASG. ASG connects to the ATM Switch via their unique TCP/IP protocol, maps the message to a standard Unisys legacy message and delivers that message via the Unisys host's ICP (LAN/WAN).

This gives the user the best of all worlds relatively economical entrée' with WAN/LAN speeds while protecting the existing investment with no changes in programming, operations or procedures to the user's ITI environment.

ASG hardware uses an embedded operating system, no PC is needed. ASG is controlled by PNC's GUI based Remote Manager on any Windows98, WindowsMe, WindowsNT, Windows2000, WindowsXP, Windows 2003 PC that has appropriate security.

Users have a choice of the following form factors:

- ASG-DT (Desk Top)
- ASG-RM (1U Rack Mount)

PNC has experience using these types of interfaces in our Front End Processor's USER1 module dating back to February of 1997.

1. MPS (5th 3rd National Bank) ITI ABS0513
2. EFunds (Deluxe) ITI AAS0524
3. Impulse (Tyme) ITI ABS0538
4. Fiserv Portland ABS0528

Non ATM Switch interfaces/protocols supported

1. EquiFax
2. Experion
3. TransUnion

Hosts supported

- Unisys via telnet (TCP/IP)
- Unisys via, CCF (Custom Connect Facility)

User supplied hardware & software

- Legacy (Bisynchronous) interface ABS0NNN
- Libra/LX7N00/ClearPath/"A" Series Unisys host
- Unisys TCP/IP ICP hardware and software
- Network hardware such as WAN a router

ASG Hardware/Software

<u>Product</u>	<u>Height</u>	<u>Depth</u>	<u>Height</u>
ASG-DT (<u>D</u> esk <u>T</u> op)	6.5"	6.25"	3.25"
ASG-RM (<u>R</u> ack <u>M</u> ount)	17.5"	10"	2"

- Embedded Operating System
- 2 (two) 10/100 NIC ports
- Diagnostic cable (for inputting IP address in initial setup)

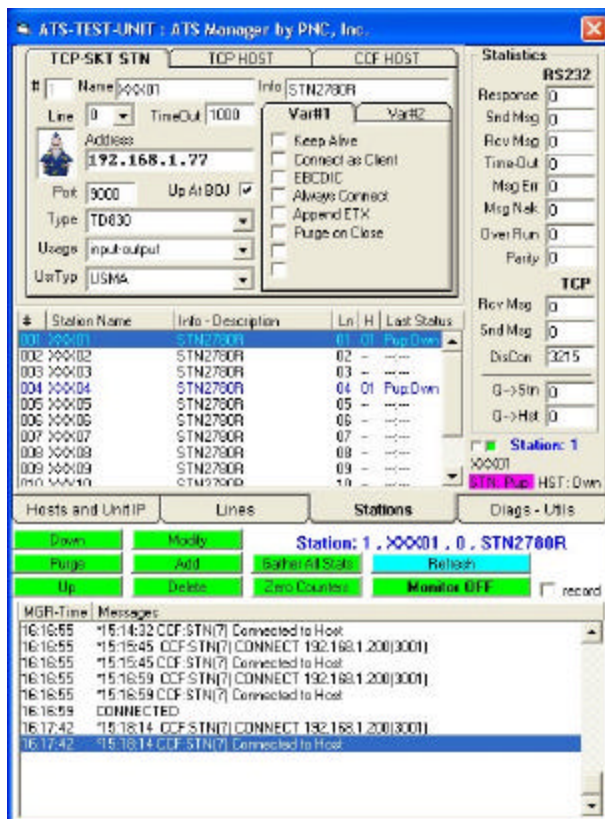
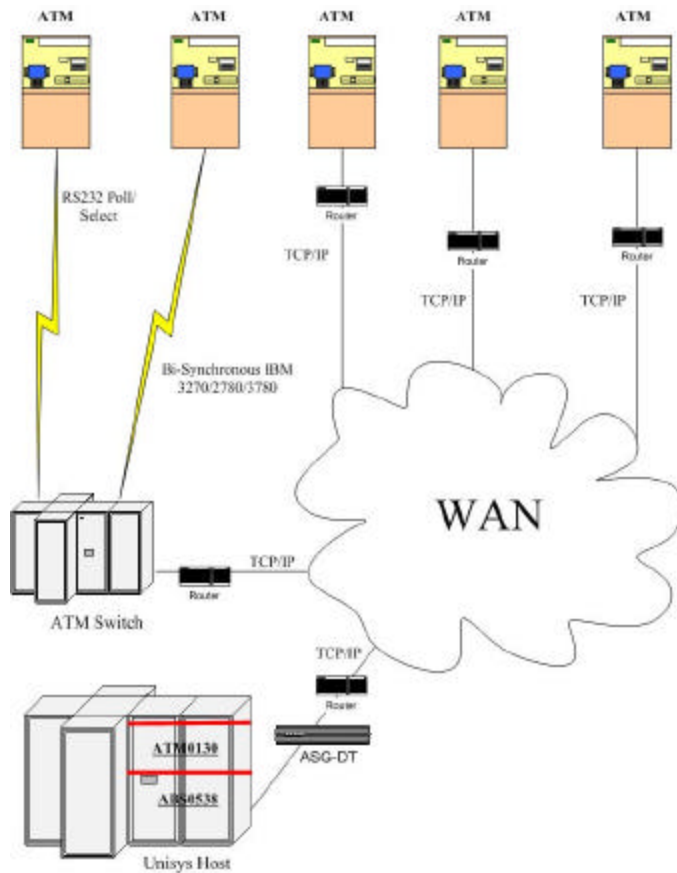
Remote Manager (included with base package)

- Runs on an Microsoft Windows 98/Me/NT/2000/2003 PC accesses ASG
- Resident PC need not be local to ASG
- GUI based with drop-down menus
- Merlin Wizard to assists & tutors specifications

ATM Switch interfaces/protocols supported

All legacy (Bisynchronous) interfaces
ABS0NNN/AAS0NNN:

Professional Networking Consultants, Inc
13301 Southwest Highway
Orland Park, IL 60462
Web Site <http://www.pnci.com>
Telephone (708)671-0100
FAX (708)671-0110



Professional Networking Consultants, Inc
 13301 Southwest Highway
 Orland Park, IL 60462
 Web Site <http://www.pnci.com>
 Telephone (708)671-0100
 FAX (708)671-0110